

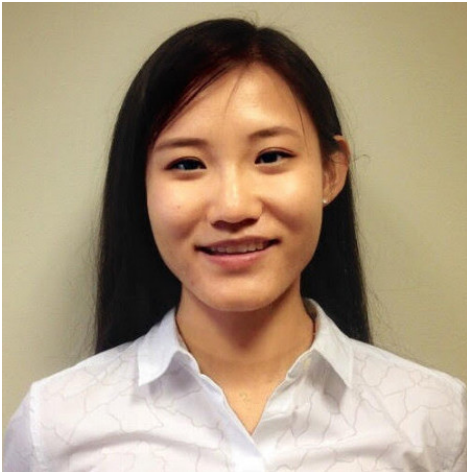
# METRANS

---

## Transportation Center

USC | CSULB

### *METRANS on the Move:* Our Weekly Newsletter for Students



Happy New Year everyone! Welcome to METRANS On the Move, a weekly transportation newsletter produced by students. We sincerely appreciate all your support for our newsletter in 2017 and look forward to sharing more with you in 2018. In this first issue of the new year, we feature an overview of the new transportation legislation for 2018, nationally and in the state of California, and will be covering more states in our next issues. You will also read about PSR students' experience visiting Foothill Transit, and encourage you to take advantage of the many similar opportunities we feature each week.

Want your research/events/experience to be featured next? Please let us know so we can shine the spotlight on you! We invite contributions from throughout the transportation community of both content and original articles. Contact me or METRANS Associate Director Victoria Deguzman at [victoriv@price.usc.edu](mailto:victoriv@price.usc.edu) to share your events, opportunities, news, and stories on this METRANS platform and reach an audience of thousands of transportation enthusiasts like you!

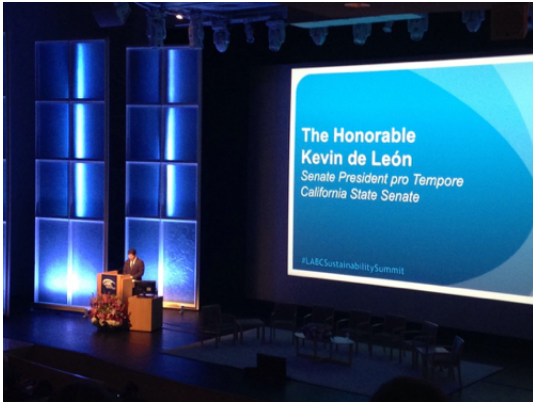
Rui Zhang  
Editor-in-Chief  
[zhan305@usc.edu](mailto:zhan305@usc.edu)

**Subscribe Now!**

**In the News**

The articles in this newsletter are prepared or accomplished by others in their personal capacity. The opinions expressed are the author's own and do not necessarily reflect the views of METRANS or its partners.

---



## Overview of New Transportation Legislation in 2018

*By Griffin Kantz, Alumnus,  
USC Price BPPD 2017*

Important legislation and policy changes related to transportation take effect this year at all levels of government. Here is an overview of the most important changes and what their impacts will likely be. [Read more here.](#)

---



## Foothill Transit Hosts METRANS PSR Students and Alumni

*By Borui Zhai, USC Viterbi MSCE 2019*

On October 28th, 2017, students and alumni from PSR universities USC, UCLA, and UC Irvine were given a private, behind-the-scenes guided tour of the facilities of Foothill Transit.

[Read more here.](#)



## Why I Support Road Diets (When They Make Sense)

*By Sam Morrissey, Associate Vice  
President at Iteris*

Sam Morrissey explains why he largely supports the concept of "road diets" provided they are implemented in areas where they will have the desired effect. [Read the Iteris blog here.](#)

---



## Orange County Sees Future in Transit-Oriented Development as Freeways Get More Jammed

OCTA plans to start construction in 2019 on a second track and platform at the Anaheim Canyon Station. The new platform will be on the same side as the Crossing apartments, allowing residents to board trains without crossing tracks.

[Read more here.](#)

# Get Involved

**2018 APPAM California Regional Student Conference**

**March 9 to 10, 2018**  
**Claremont Graduate University, Claremont, CA**  
**Call for Abstracts: Applications Due January 10, 2018**

### More Info for CA

**2018 APPAM DC Regional Student Conference**  
**April 6 to 7, 2018**  
**American University, Washington, DC**  
**Call for Abstracts: Applications Due January 26, 2018**

### More Info for DC

During these conferences, students will present research across a wide variety of policy areas, through poster sessions and on conference panels with their peers. Participating students will gain valuable research presentation experience, as well as receive important feedback from academics, practitioners, and other students. Students will have several opportunities to network and make connections with a diverse group of policy professionals, as well as other policy students.

---

**METRANS PSR has a limited number of sponsored spots for complimentary student attendance to this event. Please email Victoria Deguzman at [victoriv@price.usc.edu](mailto:victoriv@price.usc.edu) to secure your spot.**

**Distinguished Industry Leader Speaker Series**  
**USC AEC Construction Alumni Group**  
**Speaker Event: Wednesday, January 17, 2018, 5:00 pm at USC Tutor Hall (RTH) 526**

USC construction alumni group will host its first Distinguished Industry leader event. This engaging, multi-event series will feature leaders from the AEC industry who will discuss the importance of Leadership in the E&C industry.

This first event will feature [Bob Card](#) of TCG and [Lou Cornell](#) of Jacobs Engineering. Both of the guests have great industry experience including chief executive positions and can offer great insight for the future of our industry. The session will be facilitated by Philip Stassi, recently retired President of Jacobs Global Buildings and Infrastructure. Both students and industry professionals should find this event inspiring and informative.

Our event on the 17th will begin with a short networking period followed by a presentation by each of our speakers. After the presentation, there will be a panel discussion with an interactive Q&A session.

### Tickets and More Info

---

**Free TRB Webinar**  
**Uses of Social Media During an Airport Emergency**  
**January 18, 2018, 11:00 am to 12:00 pm**

TRB will conduct a webinar on Thursday, January 18, 2018 that features research from the [Airport Cooperative Research Program](#) (ACRP)'s [Synthesis 82](#): Uses of Social Media to Inform Operational Response and Recovery During an Airport Emergency.

This webinar will serve as an introduction to using social media platforms at airports to enhance situational

awareness and resource allocation decisions during emergency situations. The presenters will describe how social media has changed the speed of communications that an airport may expect to experience, and how airports may affect the flow of information that may assist with making critical decisions.

## RSVP & More Info

---

### USC Career Fest

**What Every International Student Should Know About Getting a Job in the U.S.**

**Monday, January 29, 2018, 5:00 pm to 7:00 pm**

**USC University Park Campus, Bovard Auditorium (ADM)**

**3551 Trousdale Parkway, Los Angeles, CA 90089**

Studying in the U.S. is a powerful first step towards making U.S. employment a reality, but each year thousands of international students are surprised to discover that it takes more than an American degree to get a job in the U.S. Job-seekers need to understand the unique challenges facing international students. In this presentation, Dan Beaudry, former recruiter and author, provides expert tips for international students to find jobs in the U.S.

Click [here](#) to see more information.

## RSVP

---

**METRANS PSR has a limited number of sponsored spots for complimentary attendance to this event. Please email Jiarui Li at [jiaruil@usc.edu](mailto:jiaruil@usc.edu) to secure your spot.**

### METRANS PSR Student & Alumni Tour

**Gerald Desmond Bridge Replacement Project**

**Thursday, February 15, 2018, 10:30 am to 12:00 pm**

Trip includes round-trip transportation to and from USC, CSULB, UCI, and UCLA

-Lunch included

-A tap card to keep

**-Your own PPE gear to keep**

-A Guided bus and excursion trip of the Gerald Desmond Bridge Project

**Please see the flyer for more information.**

## Flyer

---

### The 19th Annual CTF Transportation Forum

**Wednesday, February 21, 2018, 10:00 am - 2:30 pm**

**Sacramento Convention Center**

Confirmed speakers and more details coming in 2018!

Join transportation professionals from the private and public sector for this very important event, register to attend or sponsor today!

**Early Bird Rate ends January 31.**

**To register and pay by check [click here](#) to download the Mail-In Check Registration Form and**

follow the instructions on the form.

## More Info & RSVP

---

**METRANS PSR has a limited number of sponsored spots for complimentary attendance to this event. Please email Victoria Deguzman at [victoriv@price.usc.edu](mailto:victoriv@price.usc.edu) to secure your spot.**

### **METRANS Student & Alumni Field Trip**

**March 24, 2018**

**Anaheim Regional Intermodal Transportation Center  
Behind-the-scenes Guided Tour**

- 67,000 ft.<sup>2</sup> (6,200 m<sup>2</sup>) & \$185.2 million
- LEED Platinum certified
- 2015 Public Works Project of the Year (APWA)

**Roundtrip Metrolink fare from LA Union Station included**  
**For more information, contact Yang Deng at [dengyang@usc.edu](mailto:dengyang@usc.edu)**

## Flyer

---

**METRANS PSR has a limited number of sponsored spots for complimentary student attendance to this event. Please email Victoria Deguzman at [victoriv@price.usc.edu](mailto:victoriv@price.usc.edu) to secure your spot.**

### **NaTMEC 2018**

**National Travel Monitoring Exposition and Conference**

**June 10 - 13, 2018**

**Hotel Irvine, Irvine, California**

**Sponsored by**

**Pacific Southwest Region University Transportation Center (PSR UTC)**

The bi-annual National Travel Monitoring Exposition and Conference (NaTMEC) provides travel monitoring professionals and transportation data users from around the world opportunities to share knowledge and good practices, exchange ideas, revisit fundamental concepts, learn new processes, procedures and techniques, and see the latest advancements in policy, technology, and equipment.

## More Info

# Scholarships & Academic Opportunities

**APA TPD Student Paper Competition**

**Call for Papers**

**Applications Due Friday, January 26, 2018**

**Submission instructions must be followed to receive an award.**

**Send questions and final submissions to:**

Laurel Land, AICP  
Chair, Student Paper Competition  
APA Transportation Planning Division  
E-mail: [lland@rpcgb.org](mailto:lland@rpcgb.org)  
Phone: 205-264-8473

**Flyer**

---

**ITS California 2018 Scholarships  
For Studies In Intelligent Transportation Systems (ITS)  
Applications Due February 1, 2018  
\$2,500 for the 2018-19 academic year**

**Degree: Junior undergraduates, senior undergraduates pursuing a graduate degree and Masters/Ph.D. candidates in any ITS-related field including transportation planning, engineering, transit, transportation policy, etc.**

Please select the appropriate scholarship information depending upon if you are a veteran or non-veteran.

**Please see the flyers for more information.**

**Student Application**

**Veteran Application**

---

**Transportation Technology Tournament  
Applications Due February 15, 2018**

The National Operations Center of Excellence (NOCoE) and the U.S. DOT ITS JPO PCB program announce a competition for students to work directly with state and local DOTs to solve real-world transportation problems utilizing ITS and TSMO solutions.

Student teams will assemble and work with a local or state agency to define a problem or challenge in their region, or choose to address one of the sample problems outlined below. After submitting an initial contest application identify the team and the problem or challenge, students will work with academic advisors to learn about potential ITS and TSMO solutions via online training programs outlined below. Teams will then utilize their experience, education, and new coursework to develop a solution or suite of solutions to directly address the originally defined problem. Students will submit their solutions via a proposal. Finalist teams will develop a presentation and then will be flown to the Institute of Transportation Engineers (ITE) 2018 Annual Meeting in Minneapolis to give a live presentation in front of a panel of judges made up of leaders in the ITS and TSMO community.

**Please feel free to contact Adam Hopps at [ahopps@transportationops.org](mailto:ahopps@transportationops.org) or phone (202-680-0091) with any questions in advance of submission.**

**More Info**

---

**The Benjamin H. Stevens 2018 - 2019 Graduate Fellowship in Regional Science  
Applications Due February 15, 2018**

Graduate students enrolled in Ph.D. programs in North America are encouraged to apply for the Eighteenth Benjamin H. Stevens Graduate Fellowship in Regional Science, administered by the North American Regional Science Council of the Regional Science Association International (NARSC-RSAI).

The Fellowship consists of a stipend in the amount of \$30,000 (U.S.), paid over a twelve-month period. Applications for the 2018–2019 Fellowship should be sent electronically by the applicant to the Selection Committee Chair, Professor Mario Polèse, [mario.polese@ucs.inrs.ca](mailto:mario.polese@ucs.inrs.ca) by the deadline of February 15, 2018.

**Applications should be emailed to Professor Mario Polèse at [mario.polese@ucs.inrs.ca](mailto:mario.polese@ucs.inrs.ca).  
Questions may also be sent to him at [mario.polese@ucs.inrs.ca](mailto:mario.polese@ucs.inrs.ca).  
For information about the Regional Science Association International (RSAI),  
go to [www.regionalscience.org](http://www.regionalscience.org).**

**More Info About NARSC**

---

**\$5,000 CTF Heckerth Scholarship  
Applications Due Friday, February 16, 2018**

Students who attend a California university or community college, major in Civil Engineering, have a cumulative GPA of at least 3.5 and plan to pursue a career in transportation after graduation are encouraged to apply. The scholarship is competitive and based on the applicant's commitment to a career in transportation, current achievements, and academic record. Eligible applicants are a United States citizen, permanent resident, or documented international student.

**To apply for the CTF Heckerth Scholarship download the application by clicking [here](#).**

**Contact CTF at [sarah\\_west@transportationfoundation.org](mailto:sarah_west@transportationfoundation.org) for more information.**

**More Info**

---

**Diane Woodend Jones WTS Chair Scholarship  
Eno Leadership Development Conference for Emerging Professionals  
Applications Due Friday, February 16, 2018  
The 2018 conference will be held May 20 - 24, 2018, in Washington, DC**

Thanks to the generosity of Diane Woodend Jones, WTS Chair, one of the 2018 Eno Center for Transportation's Leadership Development attendees will be a WTS member and attend at no cost.

**For more information about the program and past speakers,  
please e-mail [LDC@enotrans.com](mailto:LDC@enotrans.com).**

**Flyer**

---

**2018 Parking Solutions Competition: Garage of the Future  
Applications Due February 23, 2018**

The International Parking Institute (IPI) Parking Solutions Competition is a design and development challenge

for college students. This competition is a chance for students to express their rendition of The Garage of the Future. IPI seeks to engage students in a challenging parking solutions exercise based on real-world scenarios. Students can submit independently or form their own multidisciplinary teams. Finalists will be selected on the basis of creativity, innovation, realism, applicability, scalability, overall presentation and the idea's ability to benchmark success and demonstrate return on investment.

Notifications and invitations to the four finalists: **March 2018**  
Four finalists to IPI's 2018 Conference and Expo: **June 2018**

## More Info

---

### **\$5,000 CTF Graduate School Scholarship** **Applications Due April 2, 2018**

Students who are studying a transportation-related field; are currently enrolled as a student in good standing in a California graduate school, or are currently enrolled in an undergraduate institution and have been accepted into a California graduate school; and are a United States citizen, permanent resident, or studying in legal visa status are eligible to apply. The weight of the selection criteria will be: essay (67%); letter of recommendation (11%); undergrad grades (11%); work, professional experience, and leadership (11%).

**To apply to the CTF Graduate School Scholarship download the application [here](#).**

**Contact: CTF at [sarah\\_west@transportationfoundation.org](mailto:sarah_west@transportationfoundation.org) for more information.**

## More Info

---

### **23rd National Rural Public and Intercity Bus Conference** **College and University Rural Public and Intercity Bus Essay Competition** **Changing Lives, Strengthening Communities** **Applications Due at 7 pm Pacific Time, April 15, 2018**

The 23rd National Conference on Rural and Intercity Bus is scheduled to take place from September 30 to October 3, 2018 in Breckenridge, Colorado. To encourage student participation in the conference, students attending an accredited U.S. community college, four-year college, or university as an undergraduate are offered the opportunity to participate in an essay competition. Two essay winners will receive cash prizes as well as travel funds to attend the conference.

**Essay Winners: 1st place \$500 and 2nd place is \$250**

Students must attend an accredited U.S. community college, four-year college, or university as an undergraduate.

## Flyer

## Internships & Jobs

---



| <b>Job Title</b>   | <b>Agency/Firm</b>                        | <b>Deadline</b> |
|--|---|-----------------|
| <u>Central Valley Programs Manager</u>   | California Walks                          | 12-Jan          |
|  | Kern County, CA                           |                 |
| <u>Summer Transportation Internship Program for Diverse Groups</u>               | US DOT                                    | 19-Jan          |
|  | State DOT office/partnering organizations |                 |
| <u>2018 Gerhardt Internship</u>  | 100 Friends of Oregon                     | 15-Feb          |
|  | Portland, OR                              |                 |
| <u>Internships with the Science and Technology Innovation Program</u>            | Wilson Center                             | 15-Mar          |
|  | Washington, DC                            |                 |
| <u>GIS Developer (#33925)</u>  | WSP USA                                   |                 |
|  | Sacramento, CA                            |                 |
| <u>Strategic Planning Manager - Train Operations and Transportation (#34072)</u> | WSP USA                                   |                 |
|  | Sacramento, CA                            |                 |
| <u>Engineer/Planner - Entry/Level</u>  | Fehr & Peers                              |                 |
|  | Any Office                                |                 |
| <u>Multiple Openings</u>   | DKS Associates                            |                 |
|  | CA, OR, WA                                |                 |
| <u>US Planning Director</u>  | Kounkuey Design Initiative (KDI)          |                 |
|  | Los Angeles, CA                           |                 |
| <u>Practice Leader, Transportation Planning (#LOS00006X)</u>                     | ARUP                                      |                 |
|  | Los Angeles, CA                           |                 |
| <u>Transportation Planner (#147981)</u>  | HDR                                       |                 |
|  | New York City, NY                         |                 |
| <u>Transportation Planner (#1700060Y)</u>  | JACOBS CH2M                               |                 |
|  | Portland, OR                              |                 |
| <u>Complete Street Designer/Active Transportation Planner (#USPL15)</u>          | Steer Davies Gleave                       |                 |
|  | Los Angeles, CA                           |                 |
| <u>Graduate Interns</u>  | SGVCOG                                    |                 |
|  | Alhambra, CA                              |                 |
| <u>Transportation Associate I</u>  | ELTP program at LA Metro                  |                 |
|  | Los Angeles, CA                           |                 |

|  |   |  |
|--|---|--|
| <u>Planning Intern (#35438)</u>  | WSP USA                                     |  |
|  | New York, NY                                |  |
| <u>Assistant Transportation Engineer (Entry Level)</u>                           | WKE   |  |
|  | Santa Ana, CA                               |  |
| <u>Mid-Level Traffic Project Engineer</u>  | LIN Consulting, Inc.                        |  |
|  | Irvine, CA                                  |  |
| <u>Transportation Engineer II-UPS Freight</u>                                    | UPS   |  |
|  | Dearborn, MI                                |  |
| <u>Administrative Intern - Planning Division (#17-009)</u>                       | City of Manhattan Beach                     |  |
|  | Manhattan Beach, CA                         |  |
| <u>Associate Planner (#062217)</u>   | City of Palmdale                            |  |
|  | Palmdale, CA                                |  |
| <u>Designing an Innovative Transportation System for Groundbreaking Projects</u> | FUSE Fellowship                             |  |
|  | San Jose, CA                                |  |
| <u>Planner (Comprehensive)</u>   | Dyett & Bhatia, Urban and Regional Planners |  |
|  | San Francisco, CA                           |  |
| <u>Transportation Planner/Engineer</u>   | LSA Associates, Inc.                        |  |
|  | Riverside, CA                               |  |
| <u>Associate Transportation Planner</u>  | Caltrans                                    |  |
|  | Sacramento, CA                              |  |
| <u>City Transportation Engineer (#04516)</u>                                     | City of Hampton                             |  |
|  | Hampton, VA                                 |  |
| <u>Associate Planner</u>   | City of Ojai                                |  |
|  | Ojai, CA                                    |  |

## METRANS Student Newsletter Staff

Rui Zhang | Publisher, Editor in Chief | [zhan305@usc.edu](mailto:zhan305@usc.edu)  
Eric Tunell | Lead Editor | [tunell@usc.edu](mailto:tunell@usc.edu)  
Prithvi Deore | Assistant Editor | [pdeore@usc.edu](mailto:pdeore@usc.edu)  
Hue-Tam Jamme | Research Editor | [jamme@usc.edu](mailto:jamme@usc.edu)  
Yilin Zhang | Career Opportunities Editor | [zhangyil@usc.edu](mailto:zhangyil@usc.edu)

# METRANS Associates

## Major Funders



## Gold Partner



## Silver Partners



## Bronze Partners



**Foothill Transit**

**METROLINK®**



PSR Partner Universities



Twitter



Facebook



METRANS Transportation Center

**Our mailing address is:**

METRANS Transportation Center  
University of Southern California  
650 Childs Way, RGL 107  
Los Angeles, CA 90089-0626

Want to change how you receive these emails?

You can [update your preferences](#) or [unsubscribe from this list](#)