

# METRANS

---

## Transportation Center

USC | CSULB

### *METRANS on the Move:* Our Weekly Newsletter for Students



We hope you enjoy this issue of *METRANS on the Move*, transportation news by and for students. If you are not a regular subscriber but would like to be, please contact Kaitlyn Zhang ([kenanzha@usc.edu](mailto:kenanzha@usc.edu)) so she can add you to the distribution list!

Victoria Deguzman  
Associate Director, Administration  
[victoriv@usc.edu](mailto:victoriv@usc.edu)

## In the News



## Transportation Students Win WTS-LA Scholarships

METRANS is pleased to announce that several transportation students from USC and CSULB are WTS-LA 2016 scholarship winners. Read more [here](#).

---



### Introducing METRANS Student Assistant Rui Zhang

The METRANS Transportation Center is pleased to welcome Rui Zhang, who joined the student assistant team earlier this semester. Read more [here](#).



### METRANS Lunch with Practitioner: An Engineer's Perspective on the Ports of Los Angeles and Long Beach

On October, 26<sup>th</sup>, Allen Yourman from DYA joined 25 USC students to share an engineer's view of the Ports.

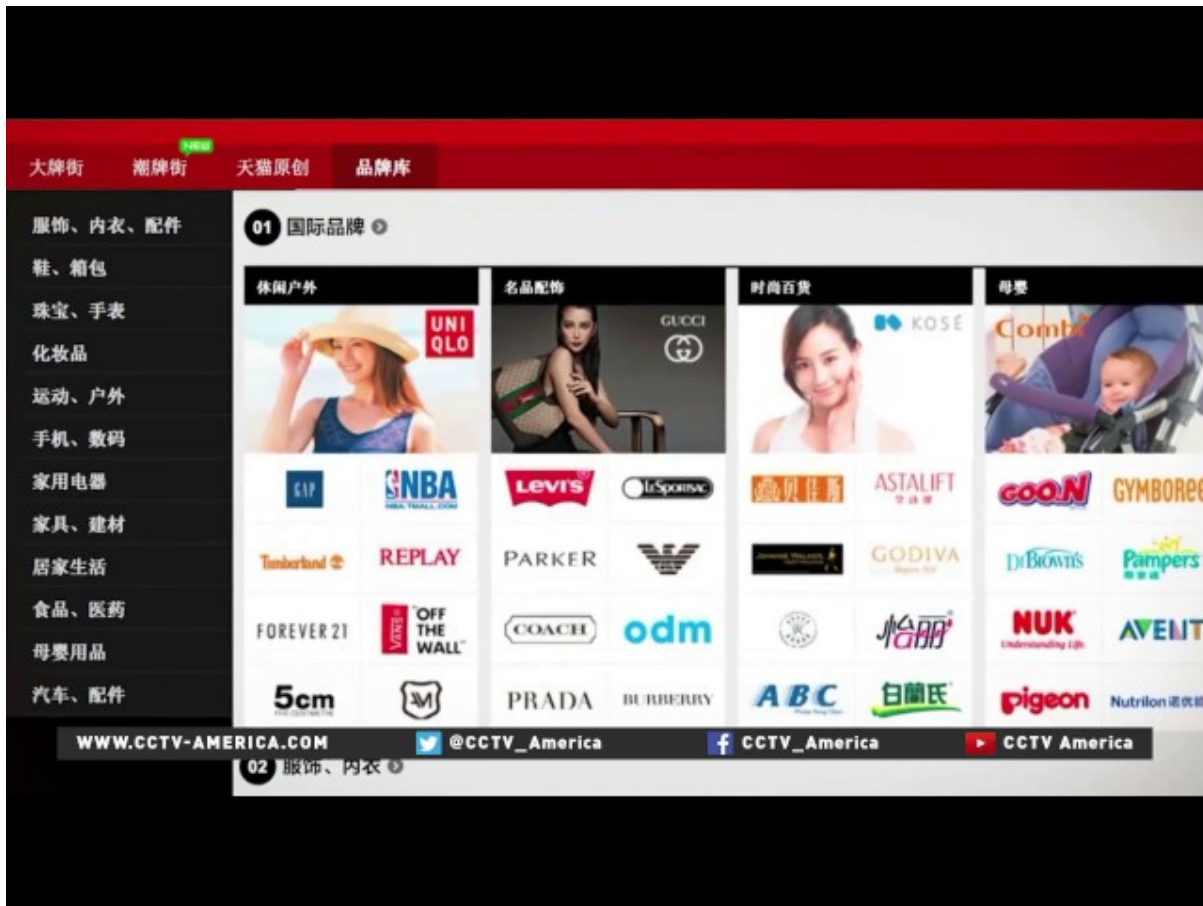
Read more [here](#).



### Los Angeles County voters signal widespread support for improving quality of life for all

All our community leaders, volunteers, partners, agency staff, elected officials and more who worked tirelessly on all the initiatives that went before Los Angeles County voters this week should be proud.

Read more [here](#).



Jean-Paul Rodrigue Interviewed on CCTV About Largest IPO on Wall Street this Year: Chinese Logistics Firm ZTO Express

Thursday, October 27, 2016 marked the first day of trading on the New York Stock Exchange (NYSE) for ZTO Express, a Chinese delivery firm that was founded 14 years ago. Read more [here](#). Click image for full video.

## Featured Events & Opportunities

# 2016 FALL METRANS RESEARCH SEMINAR

Jointly Sponsored by CITT and METRANS

Mitigating Urban Freight through Effective Management of Truck Chassis:  
Lessons from the Pool of Pools

Wednesday, November 16th, 12:00 PM to 13:30 PM

USC Main Campus, RGL 100



**Presented by Thomas O'Brien, Executive Director, Center for International Trade and Transportation (CITT) and Associate Director of CSULB Programs, METRANS**

RSVP

---

**A Green Path for Shared Mobility?**

**Wednesday, November 16th, 11:00 AM to 12:20 PM**

**UCLA Lewis Center for Regional Policy Studies**

**Kristen Pawling - How sharing can improve mobility and the environment**

California faces serious air quality challenges, aggressive climate change goals, and, in many places, inequitable mobility options. There is a plethora of shared mobility services available, many of which claim to reduce the need for single-occupant vehicle mobility. Hear about what we already know about shared mobility and the environment, what we don't know, and what key questions we should prioritize asking.

**Marcel Porras - Promoting bikeshare and carshare: The view from Los Angeles**

Public officials and planners are much more supportive of carshare and especially

Bikeshare programs than they are of TNCs. But both carshare and bikeshare, particularly the latter, require substantial public subsidy. What is the business model for these services, and how are they faring? What are the operational challenges, and can we expect that they will be resolved over time?

RSVP

---

**CTF Scholarship Opportunities**  
**Caroline Alain-Rodman Memorial Scholarship**  
**Applications Due Nov. 18th, 2016**

The desired goal is for the applicant to pursue her/his educational studies and acquire an understanding of how public policy and government affairs can affect and shape Federal, State, County or City transportation issues and decision-making processes to improve, enhance or create more effective transportation programs, infrastructures and design. Please find the application form [here](#).

**Bimla Rhinehart Memorial Scholarship**  
**Applications Due May 1st, 2017**

Eligibility Criteria: University Students Who will Be entering their senior year in the 2017 Summer or Fall terms and are enrolled in business, planning, engineering, or related major at a university in California intending to pursue a career in transportation. Applicant must be a U.S. Citizen or a Registered International Student. Please find the application form [here](#).

---



WORLD  
RESOURCES  
INSTITUTE

WRI ROSS CENTER FOR  
SUSTAINABLE  
CITIES

**Calling Young Researchers:**  
**Apply for the 2017 Lee Schipper Memorial Scholarship**  
**Applications Due November 23rd**

The Schipper family and EMBARQ, the sustainable urban mobility initiative [WRI](#)

[Ross Center for Sustainable Cities](#), are pleased to announce that applications are now open for the 2017 [Lee Schipper Memorial Scholarship for Sustainable Transport and Energy Efficiency](#). The Scholarship will award up to two extraordinary candidates a maximum of US\$ 10,000 each to advance transformative research in efficient and sustainable transport.

For more information, visit [leeschipper.embarq.org](http://leeschipper.embarq.org). If you have any questions or concerns, please contact [cities@wri.org](mailto:cities@wri.org).

## Upcoming Events & Opportunities



### **Transforming Urban Transport – The Role of Political Leadership** **Tuesday, November 15th, 9:00 AM to 10:00 AM Pacific Time**

Presenters:

- Diane Davis, *Project Director at Transforming Urban Transport & Chair, Urban Planning and Design, Harvard Graduate School of Design*
- Lily Song, *Senior Research Associate, Transforming Urban Transport & Lecturer, Harvard Graduate School of Design*

In this panel, Professor Diane Davis and Senior Researcher Lily Song will share findings from TUT-POL case studies of New York's urban streets initiatives, Stockholm's adoption of congestion pricing, and Seoul's combined highway demolition, bus system overhaul, and urban regeneration while discussing political conditions and processes explaining implementation successes. In particular, the presentation will highlight the use of data and evidence (e.g. GPS data, polling data, voter trends), public engagement and communication (e.g. public outreach campaigns, voter referendum, working committees/public task forces), and organizational and policy management in promoting implementation of urban transport policies intended to challenge car-centrism and change mode-share while also fostering mobility and environmental aims.

**For more information and to register for the webinar, click [here](#).**



**U.S. Department of Transportation**  
Office of the Assistant Secretary for Research and Technology

**T3e Webinar: Solar-powered Automated Transit Networks:  
The Future of Sustainable Urban Transportation  
Thursday, November 17, 2016, 1:00 PM - 2:00 PM ET**

The webinar will present the concept of solar-powered automated transit networks (ATNs). It will discuss why solar-powered ATNs makes sense as the preferable alternative mode of transit for dense, urban areas; what unique advantages they have; and how they can integrate into existing urban environments.

**For more information and to register for the webinar, click [here](#).**

---

**APA Los Angeles Leadership Program**

The APA Los Angeles Leadership Program is a new professional development program created to help promising, career-oriented planners prepare for leadership roles in their departments and organizations. Participants will meet together six times over six months with classes designed to help them improve their skills for positions of increasing responsibility while also growing their effectiveness in their current roles.

Program participants will gain knowledge and skills in leadership, organizational dynamics, communication, and career planning to help them identify and achieve their professional goals while equipping them with tools to make even stronger contributions to their organizations. Read more [here](#).

---

**ICF Seeks Transportation Analyst**

To support our dynamic growth and expanding client base, ICF is seeking an Analyst to support the Transportation portfolio of our Climate, Energy Efficiency, and Transportation line of business. The Analyst will be responsible for supporting ICF managers in analyzing critical issues regarding the implementation of transportation policies and planning practices, sustainable transportation initiatives, transportation

operations, travel demand management programs, environmental management, infrastructure preservation, and transportation technologies. There will also be opportunities to work with the Transportation Research Board, Federal Highway Administration, and state, regional, and local transportation agencies.

The Analyst should have a background or interest in transportation policy or planning, excellent and proactive written and oral communication skills, strong proficiency using Microsoft Office products, especially Microsoft Word and Excel, ability to learn new online software products, and strong interpersonal skills.

Demonstrated strength in conducting qualitative analyses and understanding of transportation planning and project development is desirable. The candidate will be expected to work as a part of teams to execute tasks that support the delivery of accurate, timely, and high-quality products and services.

**For more information and to submit an application, click [here](#).**

---

### **Nelson\Nygaard Consulting Associates Seeks Transportation Engineer/Associate**

Nelson\Nygaard Consulting Associates is seeking a highly organized, independent, and motivated member of our staff to support our San Francisco office and Nelson\Nygaard's nationally recognized multimodal transportation planning practice.

This practice emphasizes creative and innovative transportation planning and community involvement, often within a wider set of goals such as economic development, health, and reduced dependence on the private automobile. We are seeking an individual with at 1-3 years of experience and a strong interest in transportation engineering, multimodal planning and design. A background in developing sustainable strategies to improve community accessibility and mobility is preferred.

**For more information and to submit an application, click [here](#).**

---



# Airport Cooperative Research Program

## University Design Competition for Addressing Airport Needs

*2016 - 2017 Academic Year*

The Airport Cooperative Research Program (ACRP) is sponsoring a national competition for universities that engages students in addressing issues relating to airports and the National Airspace System. This Competition challenges individuals and teams of undergraduate and/or graduate students working with faculty advisors to consider innovative approaches related to these challenges. Submitters should design innovative solutions that focus on addressing airport issues and constraints that would enhance the management, safety, capacity, and efficiency of the nation's airports.

### Competition goals:

1. Raise awareness of the benefits of the ACRP and the importance of airports and the FAA to the National Airspace System infrastructure.
2. Increase the involvement of the academic community in ACRP and addressing airport operations and infrastructure issues and needs.
3. Engage students at U.S. colleges and universities in the conceptualization of applications, systems, and equipment capable of addressing related challenges in a robust, reliable, and comprehensive manner.
4. Encourage undergraduate and graduate students at U.S. colleges and universities to contribute innovative ideas and solutions to issues facing airports and the National Airspace System.
5. Provide a framework and incentives for quality educational experiences for university students.
6. Develop an awareness of and an interest in airports as vital and interesting areas for engineering and technology careers.

The Competition website is the participant's source for complete and up-to-date information: [vsgc.odu.edu/ACRPDesignCompetition](http://vsgc.odu.edu/ACRPDesignCompetition)

**For more information about the competition, click [here](#).**

---

**Los Angeles Metro Entry Level Trainee Program (ELTP)**

The ELTP program is designed to be an “entry-level career ladder program” for recent college graduates to gain work experience and the job skills needed to seek a full-time position within Metro or another company.

Establishes a pipeline for recent college graduates to gain entry-level or journey-level work experience as a Transportation Associate I. Recent college graduates will expose to work assignments, projects and technical skills related to their college degree.

This program intends to identify a “pool of proven performers” who are eligible to “fill new roles” that fit job skills developed over time within Metro or at another company.

Also, the ELTP offers recent college graduates an opportunity to become the next generation of Metro’s workforce.

**For more information and to apply for the program, click [here](#).**

---

**ASPAs SEIGOV (Section on Ethics and Integrity in Governance) INVITES  
SUBMISSIONS FOR ITS ANNUAL STUDENT PAPER COMPETITION  
Submissions Due December 15th**

Students in public affairs and public policy graduate programs are invited to submit their research papers authored in 2015 or 2016 on any public and administrative ethics topic, including corruption, integrity, social equity, corporate responsibility, and politics. Faculty members may also nominate student paper(s) for submission. Conference papers, term papers, and journal manuscripts are eligible for submission (literature reviews, case studies, and review essays are ineligible for entry). Please note that only one submission per student is allowed, and the paper should be written entirely by the student and not co-authored. The paper should not exceed 20 pages in length, including citations and references, and should follow APA format.

Each paper will be peer-reviewed and judged for its quality, methodology, importance, and policy implications along with clarity in writing.

The winning submission will be awarded a prize of \$250 and the author will receive a certificate of recognition from SEIGOV at the 2017 ASPA Conference, and will be announced in media publications. The section will provide financial support for the winner to attend ASPA’s national conference in Atlanta, GA, March 17 -21, 2017.

Papers (and questions regarding the competition) should be submitted to **Prof.**

Danny L. Balfour at [balfourd@gvsu.edu](mailto:balfourd@gvsu.edu) as an e-mail attachment. Please use MSWord (.doc) or Rich Text Format (.rtf).

---

**United States Department of Transportation  
2017 Summer Transportation  
Internship Program for Diverse Groups (STIPDG)  
Applications Due January 20, 2017**

The Summer Transportation Internship Program for Diverse Groups (STIPDG) provides a unique opportunity to gain valuable professional experience and skills that will complement your academic pursuits. This hands-on program is designed to mentor and cultivate tomorrow's leaders, strengthen their understanding of the transportation industry and prepare them for future public service opportunities.

The STIPDG is a paid internship program open to all qualified candidates without regard to their race, gender, color, religion, sexual orientation, national origin, age, physical or mental disability, veteran status, or any other characteristic prohibited by state or local law.

**Internship Period: June 5th - August 11th, 2017**  
**For more information and to submit an application, click [here](#).**

---

**Young Researchers Seminar 2017 - Call for Abstracts/Papers  
May 16th - 18th 2017 in Berlin, Germany**

Young Researchers Seminar is an event organized every two years in a different European country. The common vision for the Young Researchers Seminar is the preparation of a new generation of transport scientists and science-based professionals in the area of transport.

Young researchers are cordially invited to submit their abstracts. **The deadline for submitting abstracts to the YRS2017 is extended to September 30th.** They should preferably be postdoc (less than 5 years after PhD) and involved in one of the below-listed research domains:

- Transport economics, policy, and transport behavior
- Transport sustainability and environment

- Transport safety
- Intelligent transport systems (ITS) & traffic management
- Transport civil and road engineering

For more information and to submit abstracts/papers, click [here](#).

## METRANS Student Newsletter Staff

Kaitlyn Zhang | Managing Editor and Publisher | [kenanzha@usc.edu](mailto:kenanzha@usc.edu)

Shichun Hu | Education Editor | [shichunh@usc.edu](mailto:shichunh@usc.edu)

Nicole Guo | Outreach Editor | [haichaog@usc.edu](mailto:haichaog@usc.edu)

Griffin Kantz | Research Editor | [kantz@usc.edu](mailto:kantz@usc.edu)

## METRANS Associates

### Gold Partner



Port of  
**LONG BEACH**  
*The Green Port*

### Silver Partners



**METROLINK**®



**Metro**™



SOUTHERN CALIFORNIA  
ASSOCIATION OF GOVERNMENTS

## Bronze Partners



**MAJESTIC REALTY CO.**



Twitter



Facebook



METRANS Transportation Center

---

*Copyright © 2016 METRANS Transportation Center, All rights reserved.*

**Our mailing address is:**

METRANS Transportation Center  
University of Southern California  
650 Childs Way, RGL 107  
Los Angeles, CA 90089-0626

Want to change how you receive these emails?  
You can [update your preferences](#) or [unsubscribe from this list](#)

[why did I get this?](#) [unsubscribe from this list](#) [update subscription preferences](#)  
METRANS Transportation Center · 650 Childs Way Rm 107 · Los Angeles, CA 90089 · USA

