

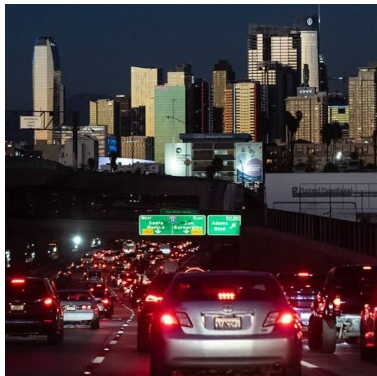


METRANS on the Move: **our weekly newsletter written and produced by students**



In the News

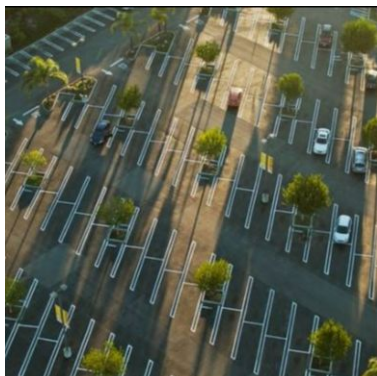
The articles in this newsletter are prepared or accomplished by others in their personal capacity. The opinions expressed are the author's own and do not necessarily reflect the views of METRANS or its partners.



Fuel Economy Flat in 2021, Emissions Down Slightly, Says EPA

Fuel economy for 2021 model year vehicles in the U.S. stayed flat with 2020 as people continued to buy less-efficient trucks and SUVs, according to an annual government report published Dec. 12. The fleet of new vehicles got 25.4 miles per gallon for the model year, while greenhouse gas emissions dropped by 2 grams per mile to a record low of 347, the Environmental Protection Agency said in its annual Automotive Trends Report.

Read the Transport Topic feature [here](#).



San Jose, California, to Eliminate Minimum Parking Requirements

San Jose, California, became the latest city to eliminate minimum parking requirements for new developments following a unanimous vote by the city council to approve the measure on Tuesday. The policy aims to make building additional housing easier and less expensive, encourage greater building density, reduce the public's reliance on cars for transportation, lower pollution and improve safety for pedestrians and cyclists.

Read the SMARTCITIESDIVE feature [here](#).



China Air Travel Demand Surges as Covid Zero Rules Dismantled

China's rapid unwinding of Covid Zero restrictions has spurred a sharp recovery in the world's biggest domestic air-travel market, throwing a lifeline to the nation's 'Big Three' airlines, which have racked up billions of dollars of losses since the start of the pandemic.

Read the Bloomberg feature [here](#).



Sound Transit Light-Rail Project Delays: Hilltop Tacoma Extension Opening Pushed Later in 2023, East Link Starter Line under Consideration

Sound Transit will not meet its Hilltop Tacoma Link Extension opening target of spring 2023 and is reassessing the opening sequence of four additional light-rail projects as it faces construction issues ranging from track geometry issues, residual effects of pandemic-related delays, ongoing supply chain challenges and other quality issues.

Read the Mass Transit [here](#).

Webinars & Online Events

Webinar: Measuring and Managing Fare Evasion

Thursday, December 15th at 10:00 am PST/1:00 pm EST, hosted by Transportation Research Board

Fare evasion has significant implications for the financial sustainability of transit systems. TRB will host a webinar that will explore the many facets of fare evasion and the recent past and emerging future of fare enforcement on transit systems. Presenters will discuss why and where fare evasion occurs, share proactive approaches to increase fare compliance, and how to respond to community and transit equity challenges.

[More Info](#)

Webinar: Scenario Planning: Forecasting the Impact of CAV's and other Uncertainties

Thursday, December 15th at 11:00 am PST/2:00 pm EST, hosted by ITE Transportation Planning Council

Transportation is experiencing several profound transformations, from changes in travel behavior due to the global coronavirus pandemic, to technology advances in vehicle communication and automation. These transformations affect the environment, social equity, and the economy at varying degrees. This webinar will discuss changing travel patterns, increases in teleworking, connected and automated vehicles (CAV), micromobility, and shared mobility, which are examples that bring new challenges and options to passenger and freight travel alike.

[More Info](#)

2022 APA Los Angeles Holiday Party

Thursday, December 15th at 5:30 pm (in-person), hosted by APA Los Angeles

This holiday season, APA Los Angeles is bringing you our best party of the year! Come celebrate with your planning colleagues. We'll have an array of appetizers and a limited open bar featuring cocktails, craft beers, and select wines. You do not need to be a member of APA to attend. Cheers to the holidays! There is a parking structure at the venue. Or take LBT bus 121 from the Downtown Long Beach Metro A Line Station.

[More Info](#)

Top Data Science Use Cases In The Logistics Industry

Friday, December 16th at 12:30 am PST (online), hosted by LEARN DATA SCIENCE BY BUILDING

The logistics industry is a highly integrated supply chain network that links producers and suppliers with consumers through multiple transportation channels, including air and express delivery services, freight rail, and truck transportation. In this massive business scale, data science plays an important role. Data-driven logistics industry aids in optimizing operations to remove costs, increasing employee efficiency, optimal fleet repositioning, demand forecasting, and dynamic pricing.

[More Info](#)

Webinar: Placeholder - BIM in the US Transportation Industry

Saturday, December 31st at 8:00 am PST, hosted by BIM for Infrastructure Subcommittee

This virtual webinar is the sixth in a series that explores opportunities and challenges presented by the shift to Digital Delivery and Digital Twins throughout the project lifecycle in the Transportation Industry in the United States. This virtual webinar focus area is Contractor Perspectives of Digital Delivery Projects with Model as the Legal Document.

[More Info](#)

Eno's Leadership Awards Reception

Wednesday, January 11th at 3:00 pm PST/6:00 pm EST. hosted by Eno Center for Transportation

Eno's Leadership Awards Reception is one of Washington's premier transportation events and this year is special because it is also a celebration of our Centennial. The event attracts current and former local and federal officials, top private sector leaders, and multimodal association leadership.

[More Info](#)

Pathways to Net Zero: Clean Mobility Via EVs, E-Fuels, Hydrogen & Biofuels

Thursday, January 12th at 1:00 am PST (online), hosted by IoT Tribe

The transportation sector accounts for more than 24% of global CO2 emissions. It is the sector with the fastest growth in CO2 emissions, expected to increase 60% by 2050 in the absence of mitigation measures. Many company activities revolve around transportation and the use of fuel, from business travel and employee commuting to the transportation and distribution of goods. Many of these are in scope 3, and are one of the biggest contributors to an organisation's overall CO2 emissions. The impact on climate change goals is significant: 60% of the CO2 emissions today are due to passenger transportation, while 40% come from freight.

[More Info](#)

2023 Annual Conference

Monday, May 8th (in-person), hosted by Women's Transportation Seminar(WTS)

The 2023 WTS International Annual Conference: The Great Intersection, will be held on May 8-13,

2023, at the Omni Atlanta Hotel at CNN Center, 220 Marietta St NW, Atlanta, GA 30303. Atlanta is a city known for its progress in equity.

[More Info](#)

IAME Conference 2023

Sunday, September 5th (in-person), hosted by METRANS

Join us at IAME 2023, the International Association of Maritime Economist Conference, to explore and learn about what is next for maritime. The conference will be hosted in Long Beach, California.

[More Info](#)

Fast Facts

Created for Students, by Students

Making Bicycling Equitable: Lessons from Sociocultural Research (White Paper)

Authors: Sarah Reboloso McCullough, Adonia Lugo, Rebecca van Stokkum

Year: 2018

Keywords: Public transit, land use, and urban mobility, transportation planning, policy, and finance



Check this week's featured Fast Facts [here](#).

Looking for more Fast Facts? Check out the Fast Facts Page on metrans.org!

[Take me to Fast Facts](#)

Pathways to Opportunity

Montana Department of Transportation Internship

Montana Department of Transportation

Apply ASAP

[see more info](#)

Wendy Tao International Smart Cities Scholarship

California Transportation Foundation

Apply by 02/14/23

[see more info](#)

[More Internships and Scholarships Here](#)

Transportation Planner
DVRPC

Associate Planner
City of Signal Hill

Apply ASAP
[see more info](#)

Apply ASAP
[see more info](#)

More Job Opportunities Here

Newsletter Staff

Namjoo Park • *Newsletter Lead* • namjoopa@usc.edu

Agil Wibowo • *Social Media Lead* • agilwibo@usc.edu

Jacob Wong • *Staff Writer* • wongjaco@usc.edu

METRANS Associates

Major Funders



Associate Partners



Academic Partners



Copyright © 2022 METTRANS Transportation Consortium, All rights reserved.

New users and interested parties: [subscribe here](#).

Want to change how you receive these emails?
You can [update your preferences](#) or [unsubscribe from this list](#).