



## ***METRANS on the Move:*** **our weekly newsletter written** **and produced by students**



### ***In the News***

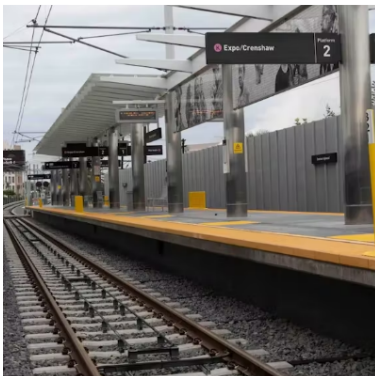
The articles in this newsletter are prepared or accomplished by others in their personal capacity. The opinions expressed are the author's own and do not necessarily reflect the views of METRANS or its partners.



#### **Federal Grants Aim to Reconnect Communities Divided by Highways**

In 1969, hundreds of Black residents of Baltimore's West Side received a notice from the city: Their houses were going to be demolished to make room for a new highway. More than 1,000 homes and businesses were in the path of the thoroughfare, which was designed to link up three interstates; nearly 3,000 people were displaced.

Read the Bloomberg feature [here](#).



#### **L.A. Metro Board of Directors Approves \$31 Million Pre-Construction Services Contract East San Fernando Valley Light-Rail Project**

The Los Angeles County Metropolitan Transportation Authority (L.A. Metro) Board of Directors has approved a \$31 million pre-construction services contract with San Fernando Transit Constructors (SFTC) for the East San Fernando Valley (ESFV) Light-Rail Transit Line Project.

Read the MASS TRANSIT feature [here](#).



## AVs Could Alter Trucking Insurance Landscape

The emergence of autonomous vehicle technology could have profound repercussions for trucking insurance, according to a panel of experts Feb. 28 during the Technology & Maintenance Council Annual Meeting and Transportation Technology Exhibition. Dorfman noted that the adoption of autonomous trucks could result in rates rising industrywide even if it is primarily the larger fleets utilizing the technology.

Read the Transport Topic feature [here](#).



## San Francisco Transit Agencies Face “Worst-Case Scenarios” for Revenue, Potential Service Cuts, Leaders Say

Facing higher costs, lower ridership and rider safety concerns, leaders of San Francisco-area public transit agencies worried about their ability to continue operating at current levels, let alone address rider concerns, without sources of additional funding, they said during a March 3 webinar hosted by the Bay Area Council, a business and civic organization.

Read the SMARTCITIES DIVE feature [here](#).

## Webinars & Online Events

### On the Road to Outdoor Accessibility: Communities and Transportation

**Saturday, March 11th at 4:30 pm PST/ 7:30 pm EST, hosted by The Notch Hostel**

Ari Iaccarino and Rik Ganguly have helped facilitate over 6,000 carpool rides and dozens of buses from cities to outdoor spaces through their platform Ridj-it. Since 2016, Ari and Rik have been on the frontlines of outdoor accessibility using transit and technology. Consequently, Ridj-it has been the recipient of several grants from organizations like Arc'teryx and the New England Grassroots Environment Fund. Ari's background in education and Rik's in epidemiology have allowed them to approach the outdoors from a unique perspective that focuses on human behavior and scale to enact change. Ridj-it is known mostly for its carpooling tools and programming, and for good reason. People without cars can post adventures on Ridj-it, and the community joins together to create an organic outdoor experience via transportation. Ridj-it also began the Mountain Flyer, the first roundtrip bus for outdoor recreation. But what are the barriers to expanding outdoor access to POC, immigrants, and even car owners? Hear real case studies using thousands of data points to learn several lessons including the following:

[More Info](#)

### MetroConnect How To Do Business With Metro Workshop

**Tuesday, March 14th at 10:00 am PDT (online), hosted by Metro Connect**

The Metro Diversity and Economic Opportunity Department invites you to participate in our How to Do Business with Metro Virtual Workshop. We need large and small businesses to help do all the work taxpayers have entrusted us to do - build and operate a world-class transportation system in LA County. That is where you come in. We are committed to helping you win business with Metro and we're committed to being your champions. How To Do Business With Metro Workshop is a two-hour orientation that provides information on Metro's Certification program, Small Business Program initiatives, Contract Look-Ahead schedules, and other useful information in effort to help you grow with us! Our aim is to

increase opportunities for you by providing greater access and transparency, a level playing field, a more streamlined procurement process, and improved communications.

[More Info](#)

---

## **Calculating emissions from transportation and distribution**

**Wednesday, March 15th at 9:00 am PDT (online), hosted by Sustain.Life**

Calculating your organization's transportation and distribution emissions is essential to understanding your organization's Scope 3 carbon footprint. These emissions arise from third-party transportation of goods you purchase, own, or sell. They also include storing products in third-party warehouses, distribution centers, and retail facilities. Importantly, they include shipping of your goods even when another party procures it. One of the best ways to calculate these emissions is the distance-based method. However, for companies with a lot of shipping, it can be tedious to calculate the distance for each shipment.

Sustain.Life's new feature performs this calculation in one fell swoop. In cases where you don't have origin and destination data, we can calculate a spend-based value for you. Lastly, this feature can also fill data gaps when you don't have downstream data.

[More Info](#)

---

## **Power Hour**

**Wednesday, March 22nd at 8:00 am PDT/ 11:00 am EDT, hosted by Major Mobility Investment Program's DBE Office**

The Georgia Department of Transportation (DOT) is making significant moves in transportation by introducing the most extensive infrastructure program in the southeast, and we want you to be a part of it! If you are a newly certified DBE Firm or need a refresh of the available resources, find out how the DBE Office can help you! During this event, you will have the opportunity to meet representatives of the DBE Office, learn about free resources and tools that are available to DBE firms, and increase your network by learning about other services offered by peers.

[More Info](#)

---

## **Webinar: Mobility Hubs: Facilitating Seamless Access between Modes**

**Tuesday, March 28th at 11:00 am PDT/ 2:00 pm EDT, hosted by ITE**

Mobility hubs serve a critical function in the regional transportation system as origin/destination and transfer points. They are places of connectivity where various modes of transportation—walking, cycling, riding transit, taxi services, and others—come together seamlessly and where there is mixed-use activity such as working, living, shopping, and playing. The amount and density of development feeds off the availability of and interaction between the various modes. Because mobility hubs may include many travel modes, they are prime opportunities for the application of technology innovations, including bikesharing and scooter sharing stations, carsharing and transportation network companies (TNCs), travel information, fare payment apps, and more.

[More Info](#)

---

## **Webinar: Importance of Access to Healthcare**

**Thursday, March 30th at 12:00 pm PDT/ 3:00 pm EDT, hosted by ITE**

Access to healthcare is becoming even more critical as population continues to age. Providing access to healthcare is an essential service that should be provided for everyone. Funding is often an obstacle with providing necessary service. Dr. Cyneetha Strong, a family physician who is an Assistant Professor at FSU College of Medicine, and Dr. Sandra Whitehead, a national expert on the intersection of health and the built environment, and professor and program director of the Sustainable Urban Planning at George Washington University will frame out Social Determinants of Health, why it's so important to have access

to health care, how lack of transportation is "the canary in the coalmine" for other Social Determinants of Health, provide examples of places that have good access and discuss alternative means of access.

[More Info](#)

---

## **International Association of Maritime Economists Conference 2023 -The Call for Abstracts and Papers**

**Friday, March 31st, hosted by METRANS**

The theme for this year's conference is "New Realities in the Global Maritime Economy." Researchers and industry leaders will explore what is next for the maritime economy in an environment of lingering pandemic, geopolitical conflicts, rapid technological change, and increasing urgency to manage global climate change. The 2023 conference will inspire participants from around the world with innovations and new collaborations between academia, government, and industries in response to a rapidly changing world. The Call for Abstracts and Papers is now open! Abstracts and Papers are due March 31, 2023.

[More Info](#)

---

## **Smart Transportation and Logistics**

**Wednesday, July 5th at 12:00 am PST (online), hosted by Must High-Tech Expo**

Smart Transportation and Logistics 2023 is a livestream day organized by Must B2B Metaverse on July 05, 2023. For most companies, the transportation and logistics are key for business success and could even be a competitive advantage. Technologies such as IoT & AI in transportation and logistics industries have made almost everything automated, eradicated many challenges related to real time tracking and produced important data allowing more intelligent capabilities. In this livestream day, we will develop around the latest trends in areas such as Artificial and Augmented Intelligence, Digital Twins, advanced analytics, Autonomous Vehicles, Warehouse Robotics to name just a few. Thus, more resilient, and sustainable technology approaches will harness Transportation & Logistics sector and their eco-system in the coming years.

[More Info](#)

---

## **IAME Conference 2023**

**Tuesday, September 5th - 8th (in-person), hosted by METRANS**

The METRANS Transportation Consortium at the University of Southern California (USC) and California State University Long Beach (CSULB) is honored to be able to host the International Association of Maritime Economists Conference 2023 (IAME Conference 2023) to be held in Long Beach, California, September 5-8, 2023. Since its foundation in 1992, IAME has developed into an international association with over 300 individual members from every continent and more than 10 corporate members. The Association is officially linked to two leading academic journals within the field: Maritime Policy & Management and Maritime Economics & Logistics.

[More Info](#)

---

# ***Fast Facts***

***Created for Students, by Students***

# Balancing Accountability and Flexibility in California's Local Option Sales Taxes

**Author:** Martin Wachs

**Year:** 2020

**Keywords:** California, Tax Measures, Transportation, Ballot Measures



Check this week's featured Fast Facts [here](#).  
Looking for more Fast Facts? Check out the Fast Facts Page on [metrans.org](https://metrans.org)!

[Take me to Fast Facts](#)

## Pathways to Opportunity

**WTS Foundation 2023 Strategic Partner Scholarship**  
WTS Foundation  
Apply by 03/10/23  
[see more info](#)

**Traffic/Transportation Planning**  
Michael Baker International  
Apply ASAP  
[see more info](#)

[More Internships and Scholarships Here](#)

**Assistant County Administrative Officer for Municipal Services**  
County of Santa Barbara  
Apply by 03/17/23  
[see more info](#)

**Transportation Planner**  
DVRPC  
Apply ASAP  
[see more info](#)

[More Job Opportunities Here](#)

## Newsletter Staff

Namjoo Park • *Newsletter Lead* • [namjoopa@usc.edu](mailto:namjoopa@usc.edu)  
Agil Wibowo • *Social Media Lead* • [agilwibo@usc.edu](mailto:agilwibo@usc.edu)

**METRANS Associates**

## Major Funders



## Associate Partners



## Academic Partners



Copyright © 2022 METTRANS Transportation Consortium, All rights reserved.

New users and interested parties: [subscribe here](#).

Want to change how you receive these emails?  
You can [update your preferences](#) or [unsubscribe from this list](#).